

**Installation Guide for Emphatec's Adapter Card Chassis**



1

Loosen retaining screws securing the I/O card in the chassis.



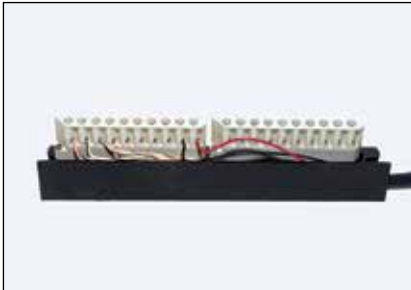
2

Pull I/O card out of chassis.



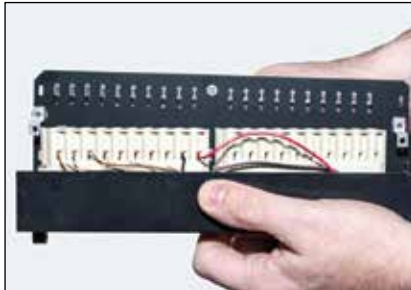
3

Remove screws securing the field wiring connector in the chassis.



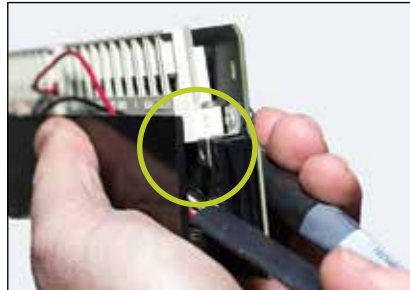
4

Remove field wiring connector with wiring intact.



5

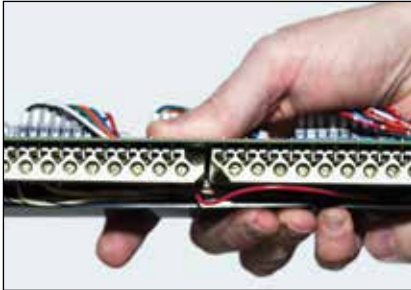
Field wiring connector slides on to the contacts on the MIBRIDGE® adapter.



6

Ensure the Z bracket on the adapter is positioned as shown.

**Installation Guide for Emphatec's Adapter Card Chassis**



7

Ensure the contacts on the adapter mate correctly with the field wiring connector.



8

Install the adapter/connector pair on the replacement chassis.



9

Tighten the retaining screw.



10

Mount the cover plate on the chassis after all the adapters have been installed.