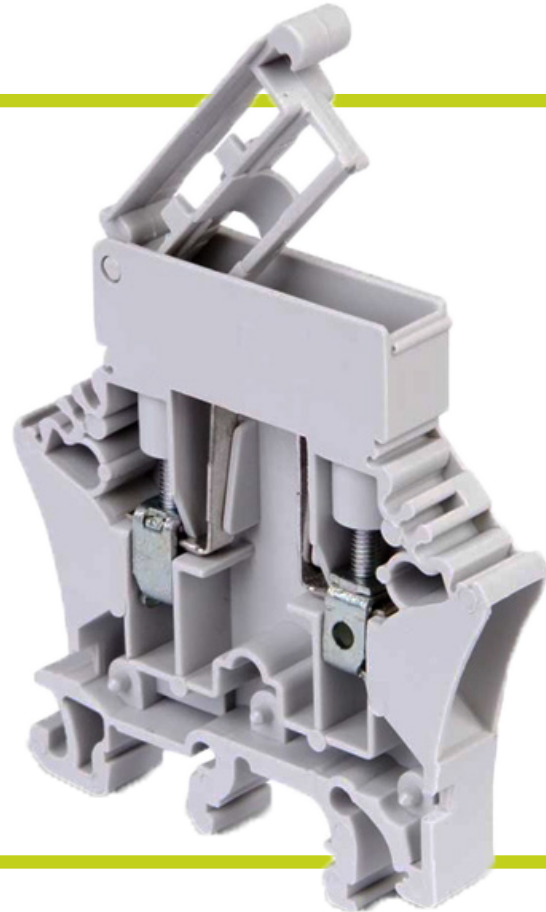




DEPRO® BC5F C1D2 Fuse Holder

- **5x20 mm fuse holder**
- **Class 1 Division 2 certified**
- **Universal mounting foot**



Emphatec has partnered with Unibloc to offer terminal blocks. It is intended as an accessory to Emphatec's DC power supplies but is also suited for general purpose use as well as Class 1 Division 2 applications. The BC5F is a 5x20mm fuse holder* and is 8mm wide. The terminal accepts Weidmuller's Dekafix and Multicard marking tags. Accessories such as partitions and jumper combs are available. The combifoot design allows a single terminal to be used on any of the commonly available DIN rails – 15mm, 32mm, 35x7.5mm and 35x15mm. For Class

1 Division 2 applications the terminal has been tested for temperature rise and pull-out. The pullout tests are not only for the wire terminations but are also performed on the fuse lever. The lever must withstand a force of 15N to ensure it cannot be accidentally operated while under load and cause an arc. Generally only screw-in style fuse terminals would meet this requirement but the BC5F passes easily.

*For an explanation of the differences between a "fuse terminal" and a "fuse holder" see the Application Note.



SPECIFICATIONS

Dimensions			
Width mm:	8	Length mm:	54
Height on 32mm rail mm:	62.7	Height on 35x7.5mm rail mm:	57.8
Height on 35x15mm rail mm:	65.3	Height on 15mm rail mm:	56.5
Terminations			
Wire size AWG / mm ² :	20-8 / 0.5-10		
Stripping length mm:	6		
Tightening torque Nm / in-lb:	0.4 / 3.5		
Ratings			
Voltage V:	300		
Current A:	10		
Approval:	CSA C22.2 No. 39-M1987 - Fuseholder Assemblies CSA C22.2 No. 158-1987 - Terminal Blocks CSA C22.2 No. 213-M1987 - Non-Incendive Electrical Equipment for Class 1 Division 2 Hazardous Locations		
Materials			
Housing:	Ultramid or Latamid		
Flammability:	UL94 – V0 (grey versions)		
Screws / clamps:	Steel, chromate plated		
Current bar:	Tin plated copper		
Disconnect:	N/A		
Disconnect / fuse clips:	Tin plated brass		
Accessories (standard package quantity)			
Endplate, 1.6mm with grey:	330019 (20)		
Insulated jumper comb:	2 pole: 330024 (10) 3 pole: 330025 (10) 5 pole: 330026 (10) 10 pole: 330027 (1)		
End Bracket - 32mm rail:	Consult Factory		
End Bracket - 35mm rail:	330089 (20)		
Marking Tags:	Consult Factory		
Catalog number:	330017		